



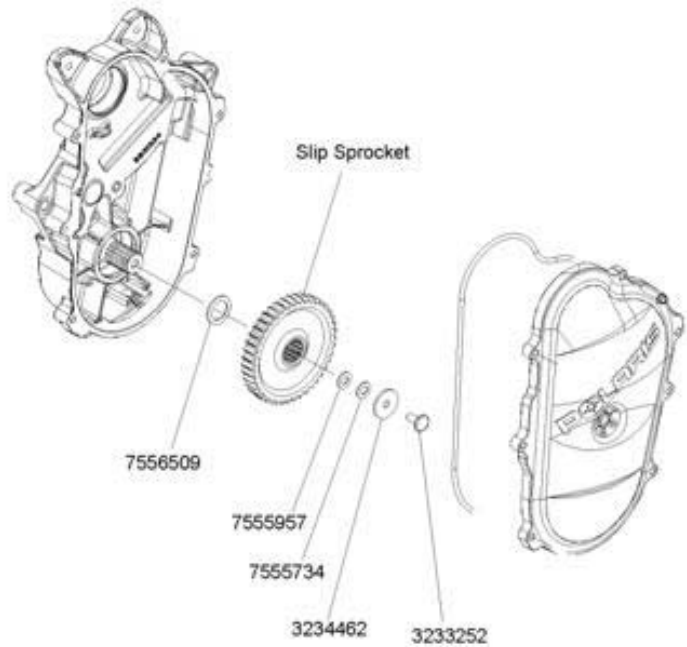
### RACE TIP #3 - 440 IQ & Roller Slip Sprocket Installation

The lower chaincase slip sprocket was not installed prior to shipment. It must be installed as per the following instructions.

# Slip Sprocket Installation

Slip Sprocket Installation

**CAUTION**  
The slip sprocket and mounting hardware were not installed on the sleds during production. The parts and instructions are in the crate and will need to be assembled before attempting to operate the machine.



#### 440 IQ Race Slip Sprocket Installation

- Sprocket is attached to track per photo
- Hardware is attached to driveshaft.
- Chain is in bag in front of nosepan.
- Remove chaincase cover
- Assemble sprocket with chain to driveshaft
  - One large washer over driveshaft
  - Assemble lower sprocket
  - Assemble 2 small washers & large washer with large washer against head of screw.
  - Torque sprocket bolt to 19 ft lbs
  - Tension chain to 1/4" +/- 1/16" with 5 lbs of force is applied to opposite side of tensioner.
  - Assemble cover & torque to 10 ft lbs
  - Add 9 oz of chaincase fluid.

